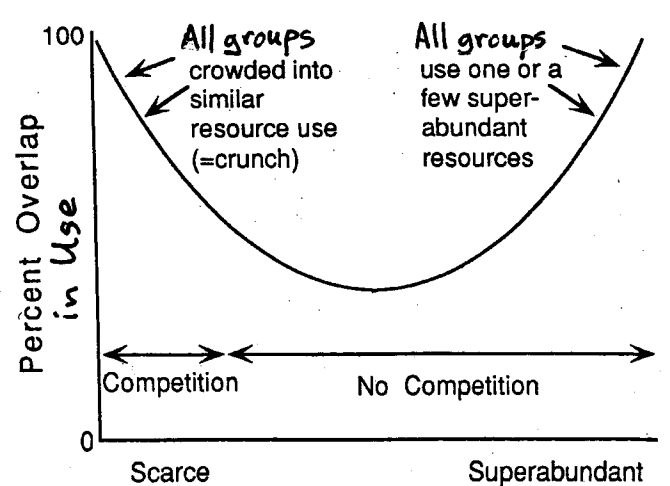
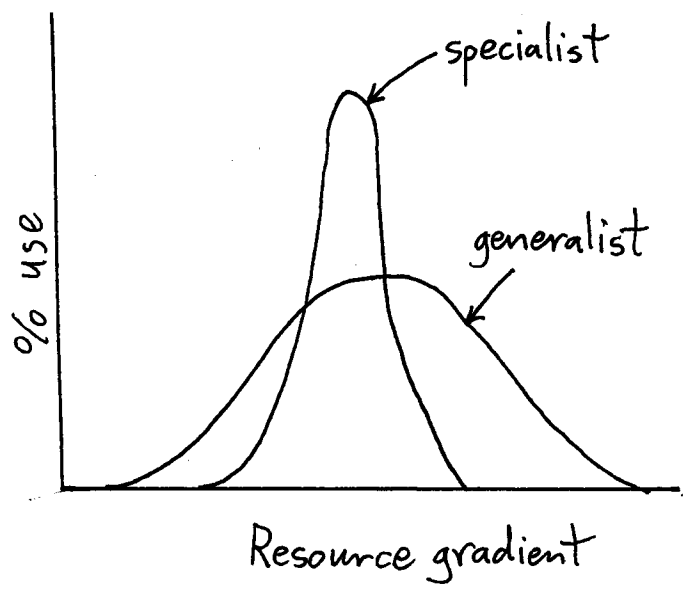
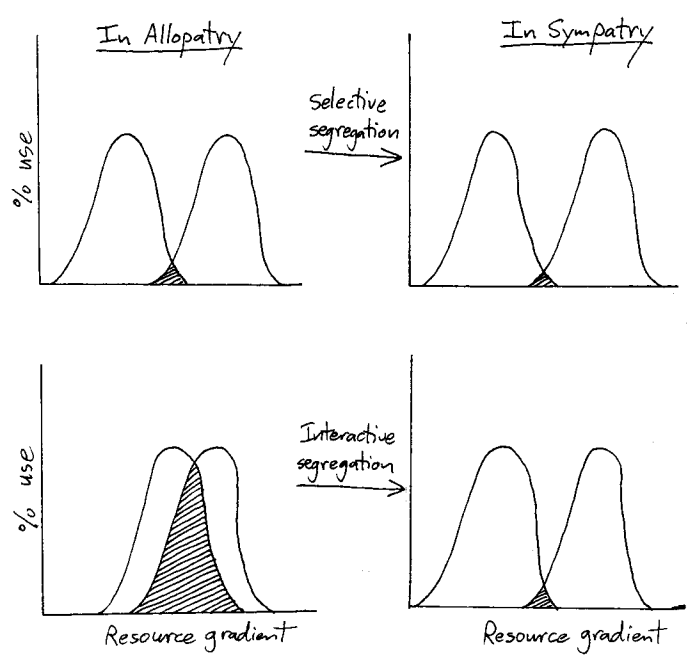
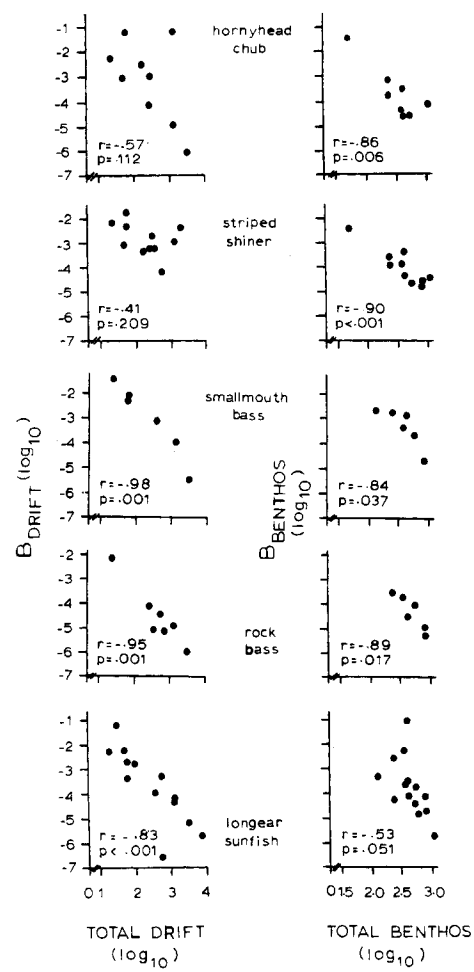
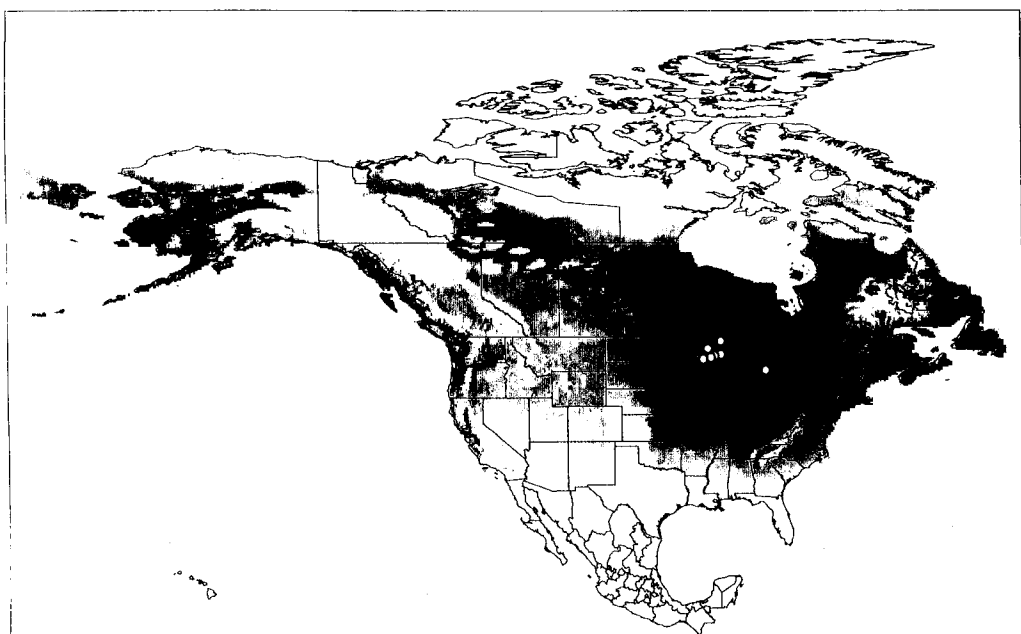


Figure 1. Potential distribution of Eurasian ruffe in North America. Darker color indicates a higher fraction of models predicting habitat for each pixel.



Availability of a particular type of a resource

Fig. 6. Plots of B_D and B_B (diet breadth indices) against invertebrate abundance of their corresponding sampling dates for 5 fish species in Jordan Creek. B_D and B_B were calculated over the composite diets of all conspecifics examined from a given sample date.

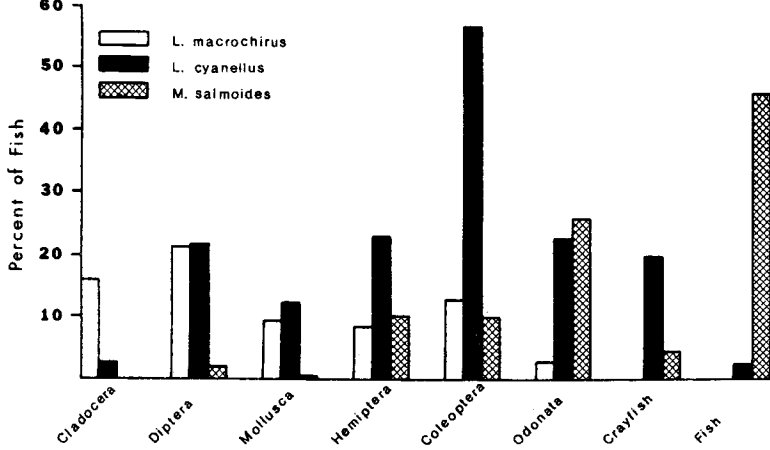


FIG. 2.—Percentage of fish containing various prey categories for three sunfishes in Lake Glendale, Ill. (Huish 1946). The prey are roughly ordered by size. The fish were representative of adult sizes: bluegill (*Lepomis macrochirus*) 150–200 mm total length, green (*L. cyanellus*) 102–200 mm, and bass (*Micropterus salmoides*) 135–288 mm.

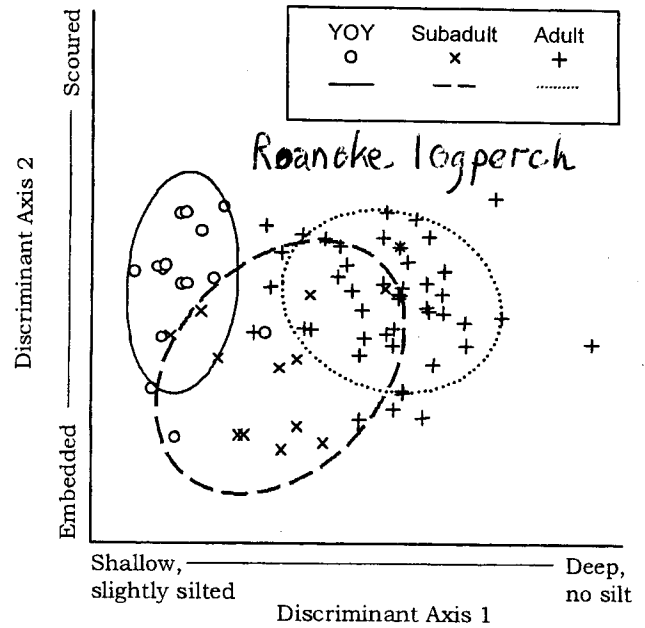


Figure 5.4. Diagrammatic representation of horizontal and vertical micro-habitat distribution of Roubidoux minnows. Habitat variables represented include lateral position, relative depth, and vertical position. Species represented include the five numerically dominant minnow species and their YOY, except for YOY *Notropis boops*, which was omitted because of small sample size and unusual micro-habitat use. Species shown: Nb = *N. boops*, Nz = *N. zonatus*, Bg = *N. biguttatus*, Nn = *N. nubilus*, Ca = *Camptostoma* spp. Overlap in vertical distribution by *N. boops* is indicated by dashed lines. Data for this figure are taken from figs. 5.2 and 5.3.

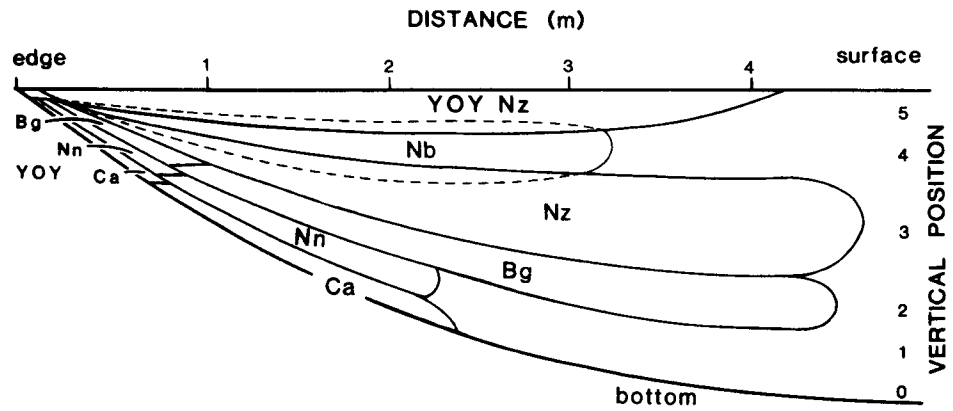


Table 2. Percent contribution of prey categories to the diets of the bluegill (*L. macrochirus*), pumpkinseed (*L. gibbosus*), and green sunfish (*L. cyanellus*) on the basis of dry weight and computed for the entire experimental period.

Prey	<i>L. macrochirus</i>	<i>L. gibbosus</i>	<i>L. cyanellus</i>
<i>Species alone</i>			
Vegetation dwellers	61	41	43
Benthic in- and epifauna	10	12	23
Open water zooplankton	8	1	1
Other	21	47	33
<i>Species together</i>			
Vegetation dwellers	15	5	40
Benthic in- and epifauna	15	34	12
Open water zooplankton	33	6	4
Other	37	55	44

Table 1. Mean size of individual *Lepomis* fish in October with mean values given in grams of dry weight \pm standard error. The initial individual weight of each species was approximately 0.1 g ($N > 100$).

Fish	Species together	Species alone
<i>L. macrochirus</i>	1.29 \pm 0.02	3.6 \pm 0.15
<i>L. gibbosus</i>	1.21 \pm 0.03	1.38 \pm 0.04
<i>L. cyanellus</i>	1.34 \pm 0.03	1.74 \pm 0.04

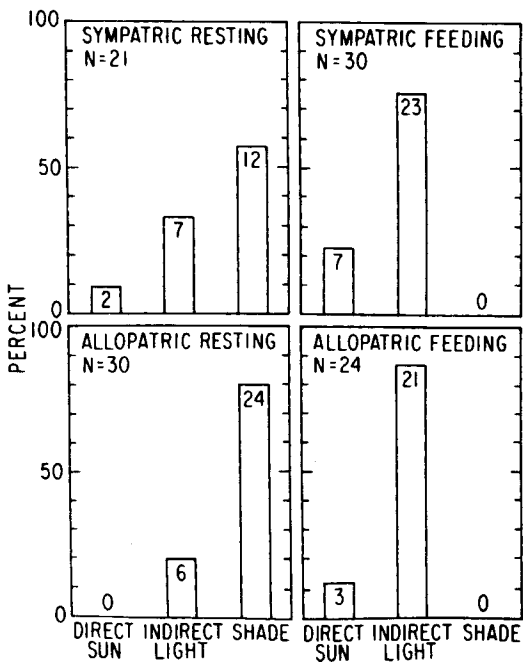


FIG. 2. Use of positions with different lighting by 15- to 30-cm brook trout in sympatry and allopatry. Numbers of observations are shown in bars.